
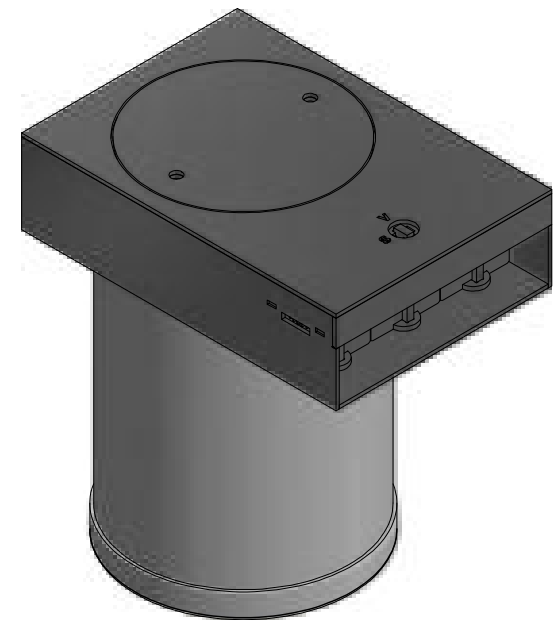
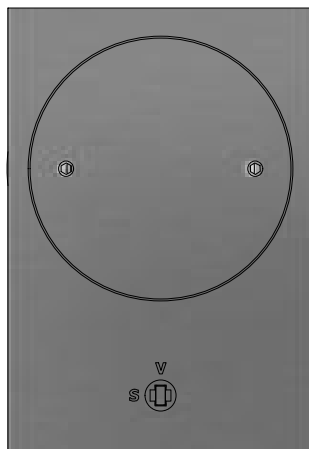
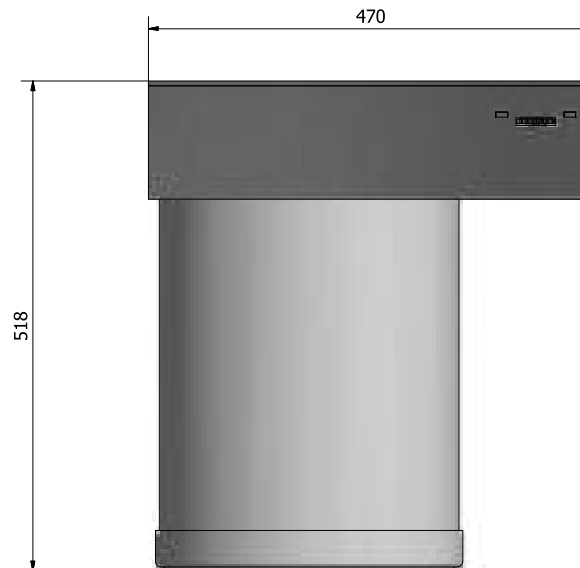
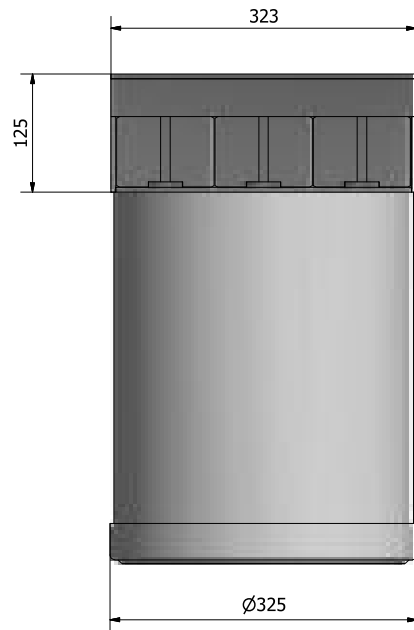
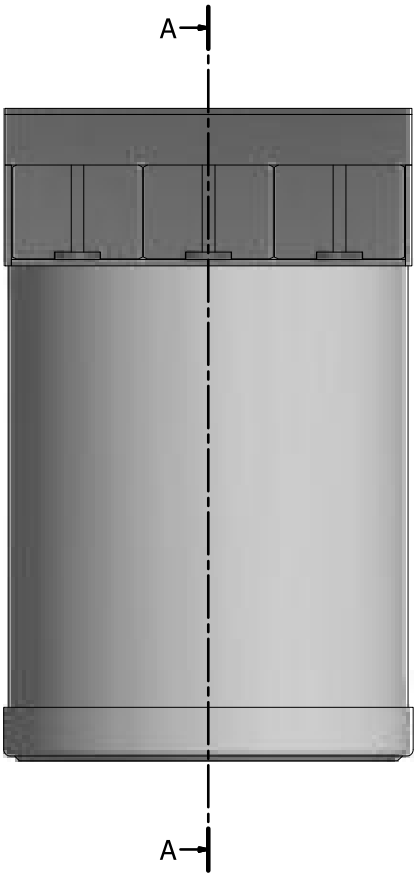


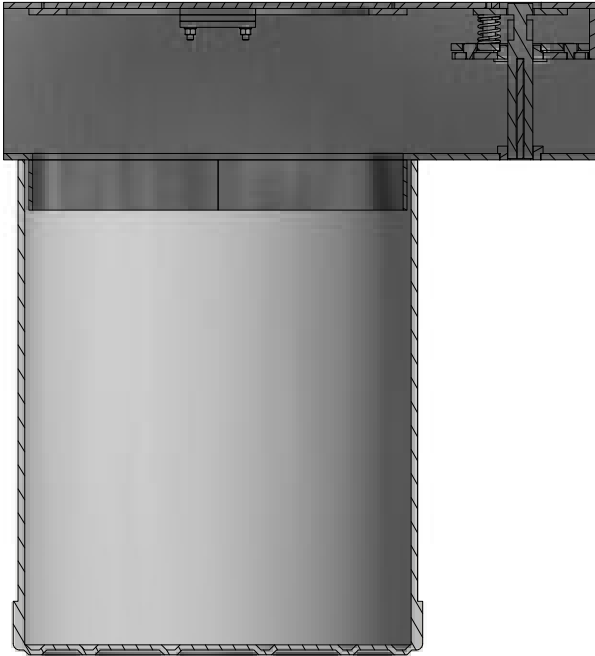
Material:					
Part description: KerbCell					
Unless otherwise specified: Dimensions are in millimeters			Right click on the icon to save the selected file		Part number: KerbCell
Flat pattern extents area: N/A		DXF file			
Flat pattern extents length: N/A					
Flat pattern extents width: N/A					
Weight: N/A	Scale: 1:3				
Designed by: Peter Jepsen	Approved by: Mark Walton	Date: 18-11-2016	Comments:		
© Copyright 			Drawing number: KerbCell		Revision: 0
Walgerholm 13-15 DK 3500 Værløse					Sheet size: A2 Sheet: 1 / 6



Material:					
Part description: KerbCell					
Unless otherwise specified: Dimensions are in millimeters			Right click on the icon to save the selected file.		
Flat pattern extends area: N/A			DXF file		STEP file
Flat pattern extends length: N/A					
Flat pattern extends width: N/A					
Weight: N/A	Scale: 1:4		Part number: KerbCell		
Designed by: Peter Jepsen	Approved by: Mark Walton	Date: 18-11-2016			
© Copyright			Comments:		
milford			Drawing number: KerbCell		Revision: 0
Walgerholm 13-15 DK 3500 Værløse					Sheet size: A2
					Sheet: 2 / 6



A-A (1:3)



Material:					
Part description: KerbCell					
Unless otherwise specified: Dimensions are in millimeters			Right click on the icon to save the selected file		Part number: KerbCell
Flat pattern extents area: N/A			DXF file	STEP file	
Flat pattern extents length: N/A					
Flat pattern extents width: N/A					
Weight: N/A		Scale:			
Designed by: Peter Jepsen	Approved by: Mark Walton	Date: 18-11-2016	Comments:		
© Copyright milford			Drawing number: KerbCell		Revision: 0
Walgerholm 13-15 DK 3500 Værløse					Sheet size: A2
					Sheet: 3 / 6